

SURFSONIX®

Smart Internet Access Solution for Education

Product Overview

Surfsonix smart internet access solution for Education (Universities, Colleges, Schools and Educational Institute) is an all-in-one box, designed to supports upto 30,000 users in wireless & wired networks.

Optimized for high performance, Surfsonix is a highly scalable, service-rich, resilient, and flexible Internet Access solution that enables next-generation wireless networks, smart devices and applications. With its exceptional features like AAA, intelligent Bandwidth Management, customizable Landing Page/Portal, WiFi & Social Analytics, Users Demographics Reports with detailed analytics of users' behavior, allows the campus to provide highly reliable, robust & secure internet services.

The gateway can be easily configured to provide internet services in classroom, library, canteen, parks, hostel and any areas of the campus. It provides easy to use multilingual web-interface. Surfsonix supports various authentication methods for secure internet access and it can be integrated with external databases (Active Directory, LDAP etc) for students & faculty authentication, and simultaneously provide access or QR codes for guest access.



BANDWIDTH MANAGEMENT

Intelligent Bandwidth Management Engine provides efficient Bandwidth Management per user, VLAN, Per Session Rate Limiting, Per Session Volume Limiting, Main Line Bandwidth Management. Dedicated and reserve bandwidth for conferences or events.



SEAMLESS ROAMING

Surfsonix ALI (Advance Login Interface) provides seamless integration of the login process into external web server on the cloud. It allows you to create a centralized login portal for users' authentication which enables seamless roaming between multiple networks across campuses.



EXTENSIVE EDU & BI ANALYTICS

Users can authenticate using Social Media, Student Database or any external webserver. 86% of Students believes Social Media adds value to Curriculum. Gather these extensive data for Business Analytics and Understand Student behavior.



SMART & SECURE CAMPUS WIFI

Provide smart and secure campus WiFi solution using Application Visibility and Control module. View in Real Time all the applications being accessed. Apply policy based traffic shaping or advance bandwidth management on application and protocol level. Create policy based internet access based on different privileges.

FACULTY EXPERIENCE

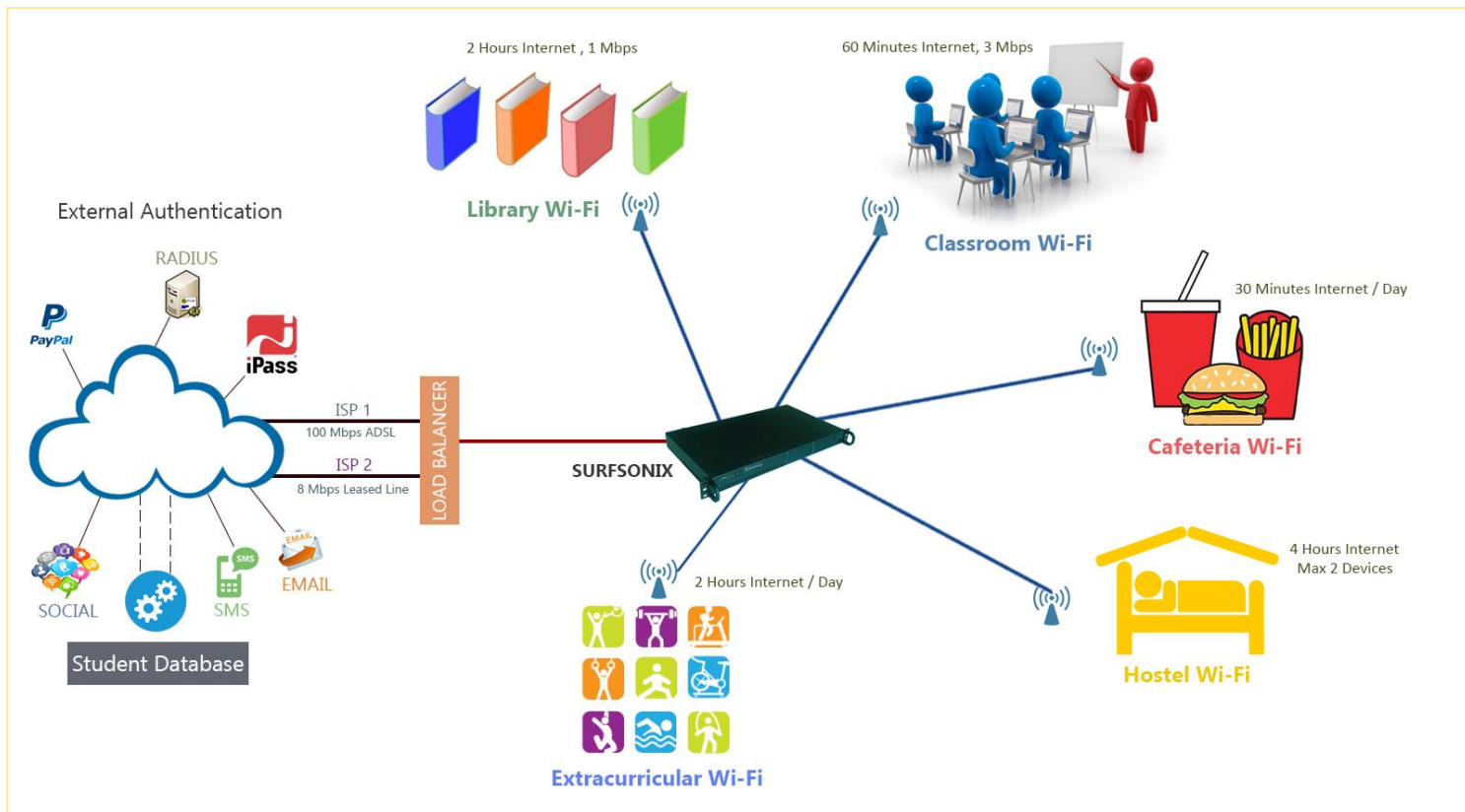
STUDENT ENGAGEMENT

WIFI ANALYTICS

CAMPUS TRENDS

SECURE WIFI SERVICES

Surfsonix Deployment Scenario



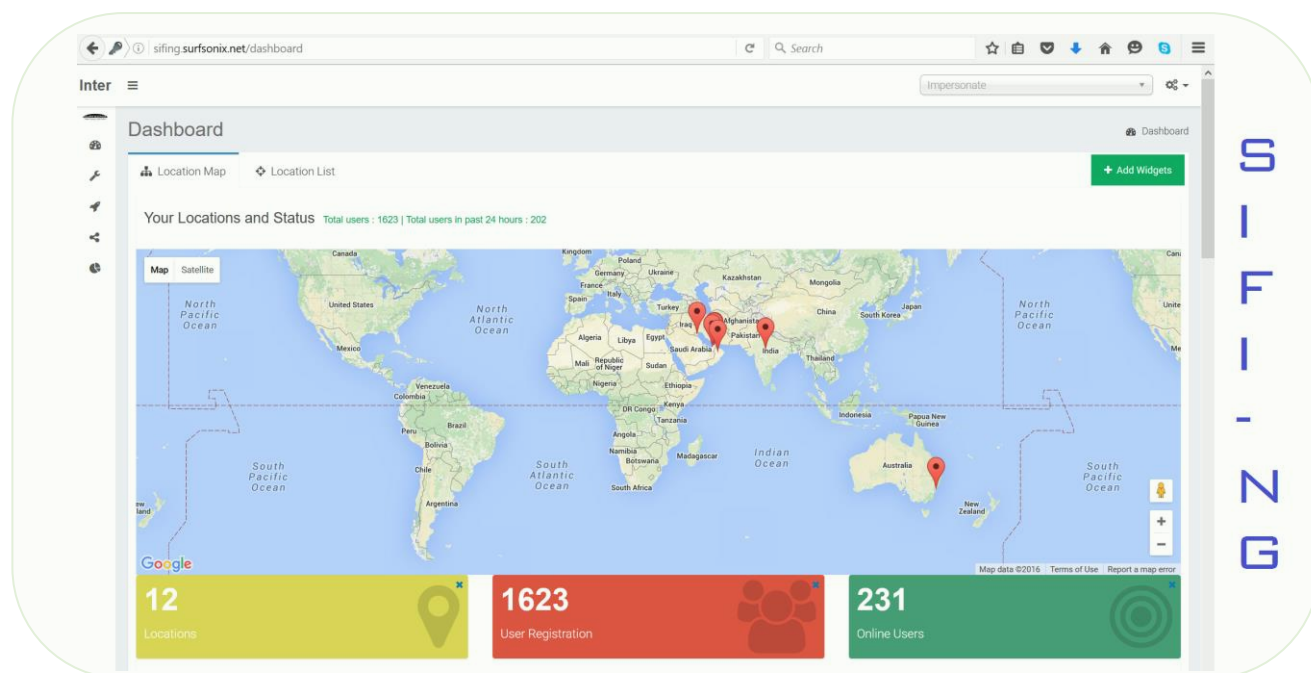
Surfsonix NG for Education



Features of Surfsonix NG Gateway:

| Features | Descriptions |
|-----------------------------------------------------------------------------------------------------|-----------------------------------------------------------------------------------------------------------------------------------------------------------------------------------------------------------------|
| Real PLUG & PLAY Connection | Static and Dynamic IP Configuration by-pass |
| | By-Pass name, number and script based Proxies (both transparent and non-transparent) |
| Authentication Types | HIS, Internal and external (AD, Radius Server, LDAP) databases, SMS, Email, Social Media, iPass, PayPal, Credit Card and Bank Payment Gateway, QR Code |
| Multi-Properties Roaming | Enabled with Surfsonix ALI and Centralized Authentication Web Server |
| Advance Login Interface (ALI) | Surfsonix ALI allows you to create a centralized corporate login page using central user authentication |
| Billing Types | Billing by time, date, data volume, bandwidth, free per user |
| Intelligent Bandwidth Management | Per user, per VLAN, per Session Rate Limiting, per Session Volume Limiting, Main Line bandwidth management. Improved QoS during congestion |
| Guaranteed Bandwidth | Allows you to define a fixed guaranteed bandwidth for certain users |
| Seamless Roaming | Allows seamless roaming from wired to wireless networks without disconnecting the existing session |
| Autologon devices | Autologon devices can be added by their MAC and/or IP address |
| Definable login hours for Autologon devices | Control internet access based on time for the autologon devices |
| Social Login Module - Basic | Allows authentication using Social Media like Facebook, Google Plus and Windows Live. Property can ask a user to Like/Follow their Social Media Channels or post a message on the user's timeline |
| SMS / Email Authentication | Allows authentication using SMS and Email |
| Remember Me | Automatic re-login of already registered devices |
| Data Collector | Collect additional customer information at logon (email, name, etc.) for marketing and security |
| Identify Repeat Users | Surfsonix identifies users that have visited the property before and display welcome message on the Landing Page |
| User Survey | Allow users to complete a survey before accessing the Internet |
| Application Visibility & Control | Allows real-time view of all applications, policy-based application access, traffic-shaping for applications like P2P (e.g. Bit Torrent), VoIP (e.g. Skype), Instant Messaging, Facebook, YouTube and many more |
| Multilayer Gateway | Operate in Layer 2 and Layer 3 modes |
| Security | AAA system (Authentication, Authorization, Accounting) |
| | IEEE 802.1X network authentication (PEAP, TTLS) |
| | Private VLAN Support (room / port isolation) |
| | Anti-Spam & Anti-DOS |
| | 802.1 q VLAN Security |
| | Patients isolation (prevent users from seeing others data) |
| | Integrated Stateful-Firewall (isolates Office-LAN from Surf-LAN) |
| | MAC Filtering |
| | Simple and Advanced HTTP Content Filter |
| | Port Filter |
| | Supports major Virtual Private Networks (VPN) |
| | DNS Tunneling protection |
| | Custom HTTP Proxy Settings (Parent Proxy) |
| | Logging of relevant actions (e.g. logon, logoff, ticket creation) |
| | Deny Roaming Between VLANS |
| | Zone based access - If configured then the tickets would be only valid in certain zones |
| Surfsonix does not push any cookies to the clients. Hence it takes care of complete client security | |
| | AES 256 bit SSL encrypted authentication |

| | |
|------------------------------------------|---------------------------------------------------------------------------------------------------------------------------------------------------------------------------------------------------------------------------------------------------------------------------------------------------------------------------------------------------------------------------------------------------------------------------------------------------------------------------------------------|
| Built-in SMTP Relay Agent | Send and receive email without using external relay agent |
| Multilingual Web Admin and Patient Logon | Support multiple languages like French, German, Arabic, Italian, Greek, Japanese, Romanian, Russian, Hebrew etc. |
| Customized Patient Logon Page | Up to 40 customizable portal/login pages |
| Flexible Accounting | Billing by time / volume/ date and bandwidth |
| | FLAT RATE: A flat rate scheme provides access to the Internet for a limited duration (i.e. 6 days) and limited volume |
| | TIME RATE: Time rate tickets allows user to log off to save the remaining time credit which can be used in the future |
| Simultaneous login of multiple devices | In the recent times patient check in to the hotel with more than one device. A patient can use the same ticket to login to multiple devices simultaneously using this feature |
| Management | User friendly Admin interface. Supports centralized management & multi-level administration control |
| Live Connection Logs | Allows the administrator to view and analyze traffics in real time i.e. no. of users online, Bandwidth usage per user, load on main internet line. Support remote loggings of all data and activities including URL Tracking, Clients Source MAC/ IP, destination MAC / IP and Protocol |
| Ticket Printer | Supports 40 ticket printers for one touch ticket printing. Can have multiple regular printers for normal ticket printing |
| Support for VPNs | Supports IPsec, PPTP, L2TP, SSL VPNs with or without Public IP |
| Public IP for VPN | Supported in both Bridged and Routed Modes |
| VIP ticket support | A patient is automatically identified as a VIP patient if a VIP flag is created in the HIS during patient check-in |
| Backup and Recovery | Support local and remote system backup allowing swift system recovery |
| Upstream Proxy | Supports configuration of upstream proxy |
| Mode of operation | Free logon, Auto logon or Paid services |
| User Notification | Notifying users about the credentials after registration via SMS or Email |
| Online Payment methods | Integration with PayPal, Credit Card, Bank Payment Gateway and Safer Pay |
| Reporting / Central Management | Central Management System for configuration, management and reporting. Extremely powerful and detailed reporting of application reports, social media analytics, user preferences, system messages, revenue, ticket statistics, users' connections, http-proxy logs, Detailed Revenue Statistics incl. Export, Real-time Logging (Login, Logoff, ...), System Notifications & Remote Syslog, Monitoring of Devices located in Surf-LAN incl. Notifications, SNMP Integration and many more. |



Features of SiFi NG (Cloud based management and analytics engine):

| Features | Descriptions |
|------------------------------------------|------------------------------------------------------------------------------------------------------------------------------------------------------------|
| Analytics and Reports | Advance and detail reports of New and Repeat users |
| | Users/visitors details like demographics, gender, preferred devices, browsers, OS etc. |
| | Analyze and display Visitors/Users information like login sources, login duration, login preferences, Age etc |
| | WiFi Analytics for visitors/users |
| | Network Analytics and reports about most popular OS, Devices, Browsers etc being used by the visitors/users |
| Advance Guest Portals/Login/Splash Pages | Centralized management and deployment of Landing/Splash pages on a global level or per property level |
| | Extremely flexible and customizable landing/splash page |
| | Conditional redirection after login (based on age, gender, visits, birthday, platform, browser type, login source or any combination of these fields) |
| | Cloud hosted and managed |
| | Multiple sources of Logins (Social Media, Form, Vouchers/Tickets and Room) |
| Enhanced User Experience | Visitors reports for all the locations |
| | Visitors recognition and greetings |
| | Seamless Roaming between properties/venues |
| | VIP Visitors recognition and notifications |
| Intelligent Bandwidth Management | Intelligent bandwidth management based on login sources (Social Media, Form, Tickets/Vouchers, Room) |
| Security | VLANs |
| | Protection of Logon/splash page from unauthorized access |
| | Verification of Visitors via SMS |
| Management | Cloud hosted |
| | Centralized Management of all the properties/venues from single dashboard |
| | Locations visible on Global Map |
| | Admin Users with different levels of privileges per location or global |
| Presence Analytics | Track devices, hence customers, even if they are not logged in |
| | Know visitors' behaviours by their dwell time, passerby vs genuine, repeat vs new, bounce rate, confirmed visitors, average visits and frequency of visits |
| | Geo-fencing technology |
| Location Analytics | Location based services |
| | Heat mapping |
| | Geo-fenced footfall count |
| | Way finding and point of interests |
| | Dwell time |

Specifications:

| Specifications | Model (Surfsonix EDU) |
|------------------------------------|-------------------------------------------------------------------------------------------------------------------------------------------------------------------------------------------------------------------------------------------------------------------------------------------------------------------------------------------------------------------------------------------------------------------------------------------------------------------------------------------------------------------------------------------------------------------------------------------------------|
| Maximum users | 30000 |
| Minimum users | 3000 |
| Maximum VLANs | 1024 |
| Supported NIC Interfaces | 10M/100M/1G/10G |
| Network Ports | 1 x MGMT, 1 x WAN, 1 x LAN |
| Power Supply | 600W Redundant High-Efficiency Power Supplies |
| Gross Weight | 20 KG |
| Dimensions | Width 17.2" (437mm) x Height 1.7" (43mm) x Depth 19.98" (508mm) |
| Included Modules and Features | Feature License: Automatic login with QR Code, Data Collector , Billing Control, Dynamic Bandwidth and Volume Control, Bypass Device by MAC/IP, Client / Client Protection, DNS Tunneling Protection, DOS Prevention, Multilingual Portal Design module, Mobile Login Page, Walled Garden, IEEE 802.1X, Port Filter, Ticket Printers module, Syslog & Infrastructure Devices Monitoring, Plug & Play module and SMTP proxy, Online Payment module, Advance Reporting Tools, Basic firewall, Basic web filter, Lawful Intercept Reporting, Detailed Revenue Statistics incl. Export, Real-time Logging |
| Additional Modules (Add-On) | |
| Advance Login Interface | Surfsonix Advance Login Interface for location based services, roaming between multiple properties & centralized authentication |
| Messaging | Surfsonix Messaging module for SMS and Email Authentication |
| External Authentication | Allows external user authentication to various data sources (Database, LDAP, Radius) |
| Application Visibility Control | Surfsonix Application Visibility Control module to allow, block or bandwidth traffic shaping for applications like P2P, VOIP, Social Networking and many more. |

EU Headquarters
Interlabz Technologies UK Limited
London, UK

MEA Headquarters
Interlabz Technologies
Dubai, UAE

APAC Headquarters
Interlabz Technologies
Bangalore, India

Surfsonix and the Surfsonix Logo are trademarks of Interlabz technologies. The use of the word partner does not imply a partnership relationship between Interlabz and the other Company.