



SURFSONIX®
Smart Internet Access
Solutions for **Retails**

Product Overview

Surfsonix is a smart internet access solution for Retails (Shopping Malls, Cafes and Coffee Shops, Individual Stores and Group of Stores) designed to supports up to 30,000 users in wireless & wired networks. Optimized for high performance and scalability, it is a service-rich, resilient, and flexible HSIA gateway that enables next-generation wireless networks, smart devices and applications. With its exceptional features like AAA, intelligent Bandwidth Management, customizable Landing Page/Portal, WiFi & Social Analytics, Presence & Location Analytics and Users demographics reports with detailed analytics of visitors' behavior, it allows the venue owners to provide highly reliable, robust & cost efficient internet services and simultaneously turn the venues into revenue sources.

Support guests authentication through various ways like Form, SMS, Coupons/Tickets, QR Code or Social Media. Whether the services are paid or complimentary, Surfsonix can guarantee Quality of Service through its intelligent Bandwidth Management feature. With it's fully Plug & Play features, the guests can access internet without difficulties thus reducing guests complains and maximizing overall guests internet experience.



BANDWIDTH MANAGEMENT

Intelligent Bandwidth Management Engine provides efficient bandwidth management per user, per VLAN, per Session Rate Limiting, per Session Volume Limiting, Main Line bandwidth management. Dedicated and reserve bandwidth for conferences or events. Allows application level and zone based advance bandwidth management.



SEAMLESS ROAMING

Surfsonix ALI (Advance Login Interface) provides seamless integration of the login process into external web server on the cloud. It allows you to create a centralized login portal for users' authentication which enables seamless roaming between multiple networks across multiple properties.



WIFI AND SOCIAL ANALYTICS

Users can authenticate themselves using various Social Media like Facebook, Twitter, LinkedIn, Instagram, Google Plus and Windows Live. Attract users with your great free WiFi and collect users' data: Email, Mobile Number, Gender, Age, and Location. Provides Analytics and Business Intelligence for Sales and Marketing.

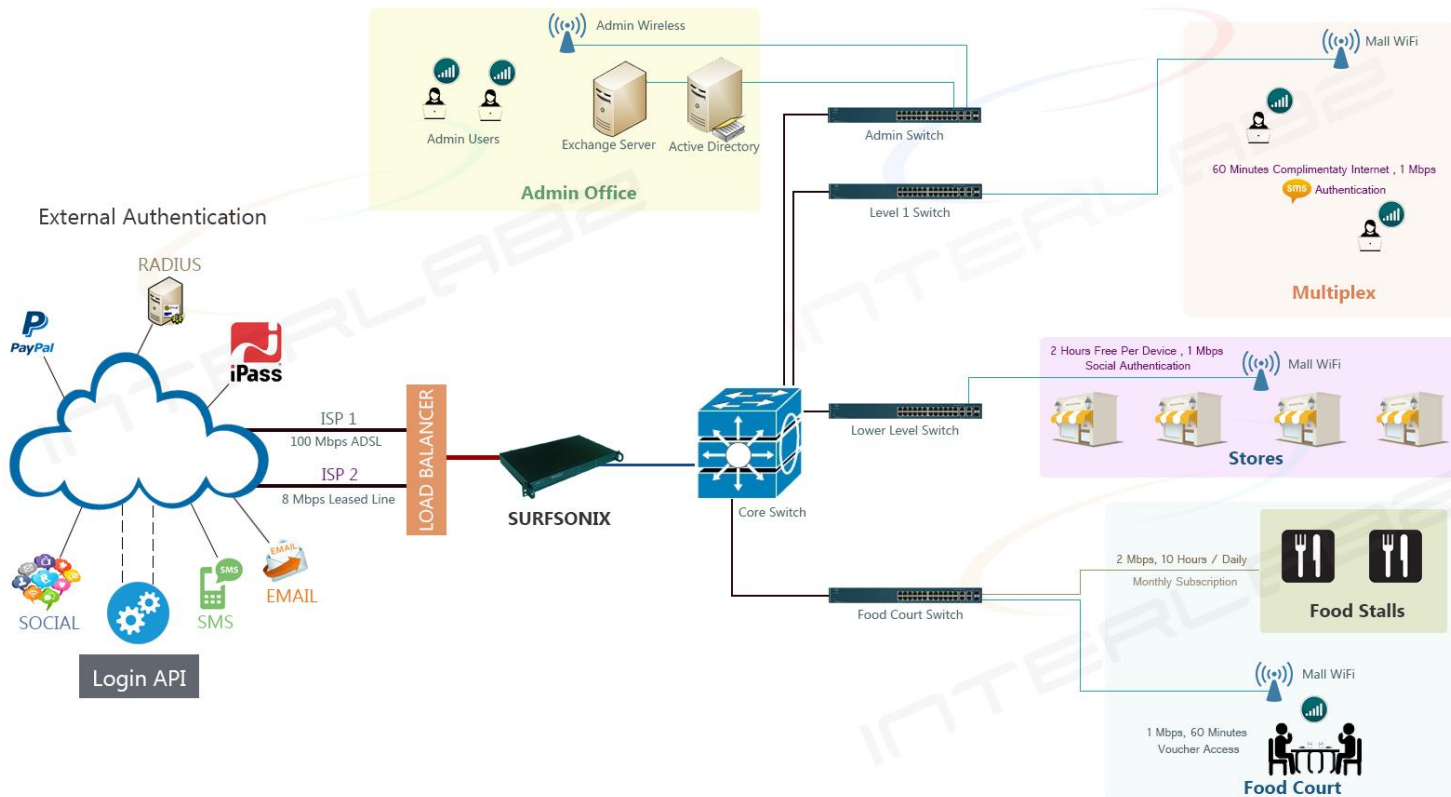


APPLICATION VISIBILITY AND CONTROL

View in Real Time all the applications being accessed. Apply policy based traffic shaping or advance bandwidth management on application and protocol level. Create policy based internet access based on different privileges.

- 100% PLUG & PLAY
- SECURE WIFI
- WIFI ANALYTICS
- LOCATION ANALYTICS
- VISITORS ENGAGEMENT

Surfsonix Deployment Scenario



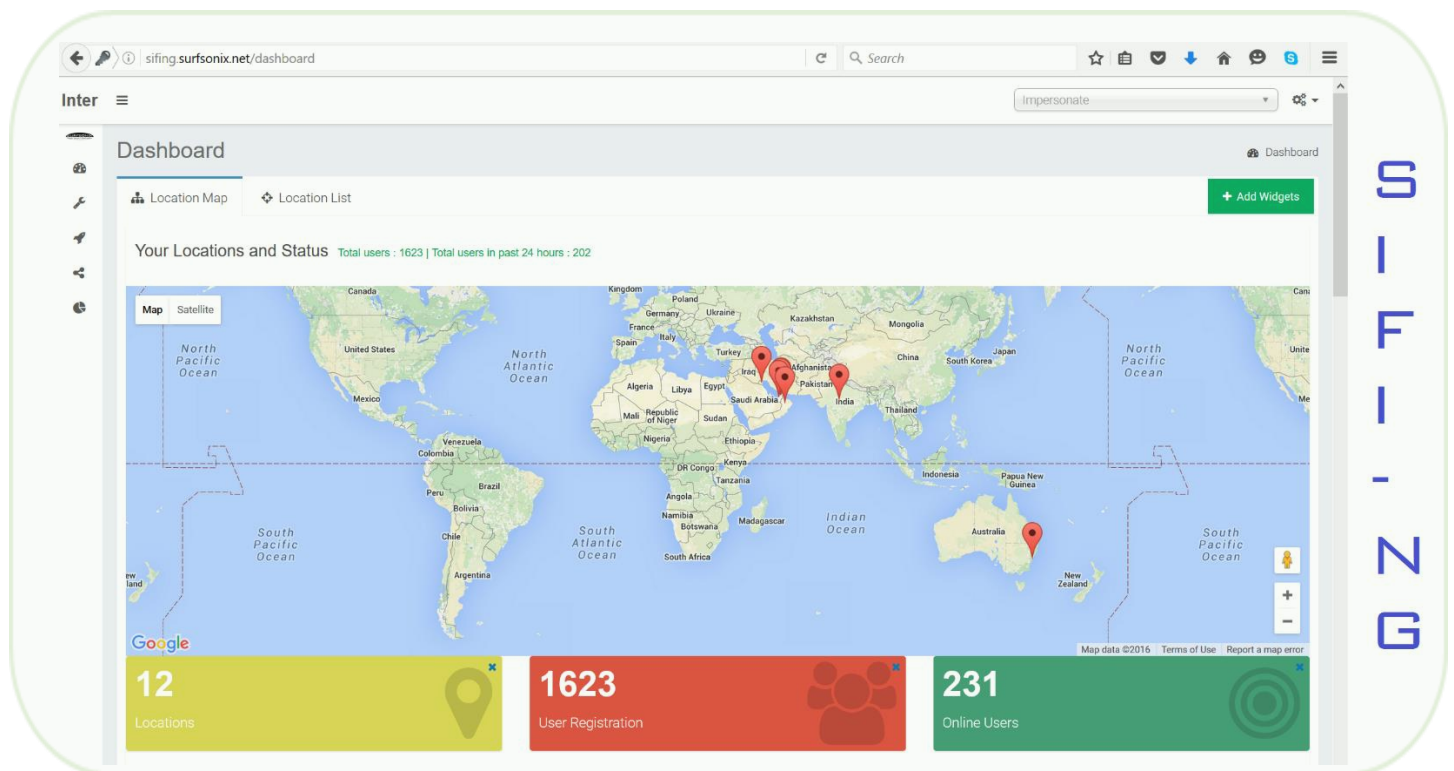
Surfsonix NG for Retails



Features of Surfsonix NG Gateway:

Features	Descriptions
Real PLUG & PLAY Connection	Static and Dynamic IP Configuration by-pass
	By-Pass name, number and script based Proxies (both transparent and non-transparent)
Authentication Types	Internal and external (AD, Radius Server, LDAP) databases, SMS, Email, Social Media, iPass, PayPal, Credit Card and Bank Payment Gateway, QR Code
Multi-Properties Roaming	Enabled with Surfsonix ALI and Centralized Authentication Web Server
Advance Login Interface (ALI)	Surfsonix ALI allows you to create a centralized corporate login page using central user authentication
Billing Types	Billing by time, date, data volume, bandwidth, free per user
Intelligent Bandwidth Management	Per user, per VLAN, per Session Rate Limiting, per Session Volume Limiting, Main Line bandwidth management. Improved QoS during congestion
Guaranteed Bandwidth	Allows you to define a fixed guaranteed bandwidth for certain users
Seamless Roaming	Allows seamless roaming from wired to wireless networks without disconnecting the existing session
Autologon devices	Autologon devices can be added by their MAC and/or IP address
Definable login hours for Autologon devices	Control internet access based on time for the autologon devices
Social Login Module - Basic	Allows authentication using Social Media like Facebook, Google Plus and Windows Live. Property can ask a user to Like/Follow their Social Media Channels or post a message on the user's timeline
SMS / Email Authentication	Allows authentication using SMS and Email
Remember Me	Automatic re-login of already registered devices
Data Collector	Collect additional customer information at logon (email, name, etc.) for marketing and security
Identify Repeat Users	Surfsonix identifies users that have visited the property before and display welcome message on the Landing Page
User Survey	Allow users to complete a survey before accessing the Internet
Application Visibility & Control	Allows real-time view of all applications, policy-based application access, traffic-shaping for applications like P2P (e.g. Bit Torrent), VoIP (e.g. Skype), Instant Messaging, Facebook, YouTube and many more
Multilayer Gateway	Operate in Layer 2 and Layer 3 modes
Security	AAA system (Authentication, Authorization, Accounting)
	IEEE 802.1X network authentication (PEAP, TTLS)
	Private VLAN Support (room / port isolation)
	Anti-Spam & Anti-DOS
	802.1 q VLAN Security
	Guests isolation (prevent users from seeing others data)
	Integrated Stateful-Firewall (isolates Office-LAN from Surf-LAN)
	MAC Filtering
	Simple and Advanced HTTP Content Filter
	Port Filter
	Supports major Virtual Private Networks (VPN)
	DNS Tunneling protection
	Custom HTTP Proxy Settings (Parent Proxy)
	Logging of relevant actions (e.g. logon, logoff, ticket creation)
	Deny Roaming Between VLANS
	Zone based access - If configured then the tickets would be only valid in certain zones
Surfsonix does not push any cookies to the clients. Hence it takes care of complete client security	
AES 256 bit SSL encrypted authentication	
Built-in SMTP Relay Agent	Send and receive email without using external relay agent

Multilingual Web Admin and Guest Logon	Support multiple languages like French, German, Arabic, Italian, Greek, Japanese, Romanian, Russian, Hebrew etc.
Customized Guest Logon Page	Up to 40 customizable portal/login pages
Flexible Accounting	Billing by time / volume/ date and bandwidth
	FLAT RATE: A flat rate scheme provides access to the Internet for a limited duration (i.e. 6 days) and limited volume TIME RATE: Time rate tickets allows user to log off to save the remaining time credit which can be used in the future
Simultaneous login of multiple devices	In the recent times guest check in to the hotel with more than one device. A guest can use the same ticket to login to multiple devices simultaneously using this feature
Management	User friendly Admin interface. Supports centralized management & multi-level administration control
Live Connection Logs	Allows the administrator to view and analyze traffics in real time i.e. no. of users online, Bandwidth usage per user, load on main internet line. Support remote loggings of all data and activities including URL Tracking, Clients Source MAC/ IP, destination MAC / IP and Protocol
Ticket Printer	Supports 40 ticket printers for one touch ticket printing. Can have multiple regular printers for normal ticket printing
Support for VPNs	Supports IPsec, PPTP, L2TP, SSL VPNs with or without Public IP
Public IP for VPN	Supported in both Bridged and Routed Modes
VIP ticket support	A guest is automatically identified as a VIP guest if a VIP flag is created during guest check-in
Backup and Recovery	Support local and remote system backup allowing swift system recovery
Upstream Proxy	Supports configuration of upstream proxy
Mode of operation	Free logon, Auto logon or Paid services
User Notification	Notifying users about the credentials after registration via SMS or Email
Online Payment methods	Integration with PayPal, Credit Card, Bank Payment Gateway and Safer Pay
Reporting / Central Management	Central Management System for configuration, management and reporting. Extremely powerful and detailed reporting of application reports, social media analytics, user preferences, system messages, revenue, ticket statistics, users' connections, http-proxy logs, Detailed Revenue Statistics incl. Export, Real-time Logging (Login, Logoff, ...), System Notifications & Remote Syslog, Monitoring of Devices located in Surf-LAN incl. Notifications, SNMP Integration and many more.



Features of SiFi NG (Cloud based management and analytics engine):

Features	Descriptions
Analytics and Reports	Advance and detail reports of New and Repeat users
	Users/visitors details like demographics, gender, preferred devices, browsers, OS etc.
	Analyze and display Visitors/Users information like login sources, login duration, login preferences, Age etc
	WiFi Analytics for visitors/users
	Network Analytics and reports about most popular OS, Devices, Browsers etc being used by the visitors/users
Advance Guest Portals/Login/Splash Pages	Centralized management and deployment of Guest portals/Landing/Splash pages on a global level or per property level
	Extremely flexible and customizable landing/splash page or guest portals
	Conditional redirection after login (based on age, gender, visits, birthday, platform, browser type, login source or any combination of these fields)
	Cloud hosted and managed
	Multiple sources of Logins (Social Media, Form, Vouchers/Tickets and Room)
Next Generation Marketing	Display of advertisements on the login portal based on user types
	E-Campaign based on number of visits, top customers, birthday etc
	Built-in digital marketing tools
	Send marketing shots based on location or global basis
	Filter guests data based on several criteria
	Generate Facebook "likes"
Enhanced Guest Experience	Guests visit reports for all the locations
	Guests recognition and greetings
	Seamless Roaming between properties/venues
	VIP Guest recognition and notifications
Intelligent Bandwidth Management	Intelligent bandwidth management based on login sources (Social Media, Form, Tickets/Vouchers, Room)
Security	VLANs
	Protection of Logon/splash page from unauthorized access
	Verification of Visitors/Users via SMS
Management	Cloud hosted
	Centralized Management of all the properties/venues from single dashboard
	All locations visible and accessible on Global Map
	Admin Users with different levels of privileges per location or global
Presence Analytics	Track devices, hence customers, even if they are not logged in
	Know visitors' behaviours by their dwell time, passerby vs genuine, repeat vs new, bounce rate, confirmed visitors, average visits and frequency of visits
	Geo-fencing technology
Location Analytics	Location based services
	Heat mapping
	Geo-fenced footfall count
	Way finding and point of interests
	Dwell time

Specifications for Surfsonix NG Gateway:

Specifications	Model (Surfsonix Retails)	
	R1	R2
Maximum users	250	30000
Minimum users	250	500
Maximum VLANs	1024	1024
Supported NIC Interfaces	10M/100M/1G	10M/100M/1G/10G
Network Ports	1 x MGMT, 1 x WAN, 1 x LAN	1 x MGMT, 1 x WAN, 1 x LAN
Power Supply	12W DC Power Supplies	600W Redundant High-Efficiency Power Supplies
Gross Weight	2 KG	20 KG
Dimensions	Width 6" x Height 1" x Depth 19.98"	Width 17.2" x Height 1.7" x Depth 19.98"
Included Modules and Features	Feature License: Automatic login with QR Code, Data Collector , Billing Control, Dynamic Bandwidth and Volume Control, Bypass Device by MAC/IP, Client / Client Protection, DNS Tunneling Protection, DOS Prevention, Multilingual Portal Design module, Mobile Login Page, Walled Garden, IEEE 802.1X, Port Filter, Ticket Printers module, Syslog & Infrastructure Devices Monitoring, Plug & Play module and SMTP proxy, Online Payment module, Advance Reporting Tools, Basic firewall, Basic web filter, Lawful Intercept Reporting, Detailed Revenue Statistics incl. Export, Realtime Logging	
Additional Modules (Add-On)		
Advance Login Interface	Surfsonix Advance Login Interface for location based services, roaming between multiple properties & centralized authentication	
Messaging	Surfsonix Messaging module for SMS and Email Authentication	
External Authentication	Allows external user authentication to various data sources (Database, LDAP, Radius)	
Application Visibility Control	Surfsonix Application Visibility Control module to allow, block or bandwidth traffic shaping for applications like P2P, VOIP, Social Networking and many more.	

EU Headquarters
Interlabz Technologies UK Limited
 London, UK

MEA Headquarters
Interlabz Technologies
 Dubai, UAE

APAC Headquarters
Interlabz Technologies
 Bangalore, India

Surfsonix and the Surfsonix Logo are trademarks of Interlabz technologies. The use of the word partner does not imply a partnership relationship between Interlabz and the other Company.